

We are not as green washed as the world wants us to believe. Balance is key.

142,439Wh of energy used daily from the grid

99.6Wh when applying energy conservation model

Consumption:

74W <0.5W (standby)

350Wh 200W <4.2 W (standby)

Offset:

Over 50MW of solar + wind + hydrogen projects power planned

> Equivalent to over 1 Billion trees planted

55 CO2 emissions on a travelling day

0 CO2 emissions when applying energy conservation model

ESG

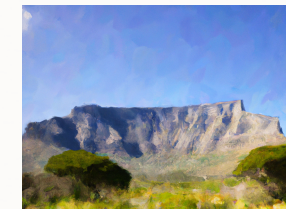
We seek to ensure that the company maintains in our attempts to meet sustainable development goals by the year 2050. We believe that operating independently and off-grid & to help others achieve the same might accelerate society towards net-zero



ENVIRONMENTAL:

E

Operates digitally in an attempt to reduce our CO2 emissions. Minimise the amount of energy measured in Joules dissipated the atmosphere by using no animal based products. Devices powered by solar panels and rechargeable batteries in our attempt to reach net-zero by 2050. Waste is minimised by the disposal of toxic substances into recycle bins.



Nature

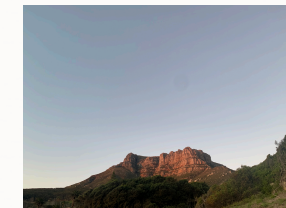


The other side

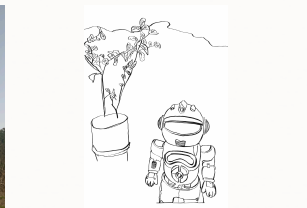
SOCIAL:

S

The interaction between various parties/ groups of people which occur to generate a prototype The type of technology which moves economies. Approximately 11 persons are involved in the development of a prototype. We are aware of mental health issues and take care of our employees by offering them therapy. The applications and products used are served based on principles of diversity and inclusion. Zero tolerance for racism.



Source



Non potest emit

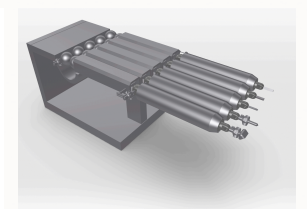
GOVERNANCE:

G

Company is led by example from each individual professional. Internal control processes include the dynamic release of transparent financial statements before AGS meetings. The affairs of the professionals are kept separate from personal lives. KVlllNg Code is the applied methodology in the books and accounting. Shareholders have the right to vote for a change in leadership/ propose new ideas and enquire about processes. Executive pay.



Provecta et antiqua
technologia coniuncta



Suscipit nec ligula ipsum
orci nulla